

# EAP300

## Business Class, Indoor Long Range Wireless-N Access Point/WDS/Repeater



### Key Differentiators

#### HIGH-POWER, LONG-RANGE WI-FI

Up to 29dBm RF Tx power provides greater Wi-Fi coverage compared to mainstream competitors

#### WIRELESS-N 6X SPEED OVER 802.11G NETWORKS

MIMO delivers up to 300Mbps speed rate

#### AESTHETIC DESIGN

"Smoke Detector" Design – Unobtrusive design can be easily mounted to wall and ceiling

#### SSID TO VLAN MAPPING

Supports 802.1q mapping of SSIDs with up to 4 VLANs

#### 802.3AF POE COMPATIBLE

Supports Power over Ethernet (IEEE 802.3af) and allows deployment in areas where power outlets are not available

#### INTEGRATED ANTENNA

Internal 5dBi antenna with optimized configuration and RF performance

### Ideal For:



- HOTELS & RESORTS
- CAMPUSES & CLASSROOMS
- PUBLIC HOTSPOTS
- CONFERENCE ROOMS
- MULTI-STORY HOMES
- COMMON AREAS
- WAREHOUSES
- RESTAURANTS



SSID TO VLAN MAPPING SEGMENTS USERS ON THE NETWORK



# EAP300 – Technical Specifications

Specifications may change without notice.

## HARDWARE SPECIFICATIONS

MCU/RF	RTL8196C + RTL8192CE
Memory	32 MB
Flash	4 MB
Physical Interface	LAN: 1 x 10/100 Fast Ethernet RJ-45 Reset Button Power Jack
LED Indicators	Power Status LAN (10/100Mbps) WLAN (Wireless connection)
Power requirement	Power Supply: 90 to 240 VDC ± 10%, 50/60 Hz (depends on different countries) Active Ethernet (Power over Ethernet, IEEE802.3af) 48 VDC/0.375A Device: 12V/1A

## RF SPECIFICATIONS

Wireless standard	IEEE802.11 b/g/n			
Frequency	2.400 ~ 2.484GHz (b/g/n)			
Modulation Technologies	OFDM: BPSK, QPSK, 16-QAM, 64-QAM DBPSK, DQPSK, CCK			
Operating Channels	11 channels			
Transmit Power	<table border="0"> <tr> <td><b>802.11b(2.412 ~ 2.472GHz)</b> 29 dBm @ 1Mbps 29 dBm @ 2Mbps 29 dBm @ 5.5Mbps 29 dBm @ 11Mbps</td> <td><b>802.11g(2.412 ~ 2.472GHz)</b> 29 dBm @ 6Mbps 29 dBm @ 9Mbps 28 dBm @ 12Mbps 28 dBm @ 18Mbps 24 dBm @ 24Mbps 24 dBm @ 36Mbps 23 dBm @ 48Mbps 23 dBm @ 54Mbps</td> <td><b>802.11n(2.412 ~ 2.472GHz)</b> 26 dBm @ MCS0/MCS8 26 dBm @ MCS1/MCS9 25 dBm @ MCS2/MCS10 25 dBm @ MCS3/MCS11 24 dBm @ MCS4/MCS12 24 dBm @ MCS5/MCS13 23 dBm @ MCS6/MCS14 23 dBm @ MCS7/MCS15</td> </tr> </table>	<b>802.11b(2.412 ~ 2.472GHz)</b> 29 dBm @ 1Mbps 29 dBm @ 2Mbps 29 dBm @ 5.5Mbps 29 dBm @ 11Mbps	<b>802.11g(2.412 ~ 2.472GHz)</b> 29 dBm @ 6Mbps 29 dBm @ 9Mbps 28 dBm @ 12Mbps 28 dBm @ 18Mbps 24 dBm @ 24Mbps 24 dBm @ 36Mbps 23 dBm @ 48Mbps 23 dBm @ 54Mbps	<b>802.11n(2.412 ~ 2.472GHz)</b> 26 dBm @ MCS0/MCS8 26 dBm @ MCS1/MCS9 25 dBm @ MCS2/MCS10 25 dBm @ MCS3/MCS11 24 dBm @ MCS4/MCS12 24 dBm @ MCS5/MCS13 23 dBm @ MCS6/MCS14 23 dBm @ MCS7/MCS15
<b>802.11b(2.412 ~ 2.472GHz)</b> 29 dBm @ 1Mbps 29 dBm @ 2Mbps 29 dBm @ 5.5Mbps 29 dBm @ 11Mbps	<b>802.11g(2.412 ~ 2.472GHz)</b> 29 dBm @ 6Mbps 29 dBm @ 9Mbps 28 dBm @ 12Mbps 28 dBm @ 18Mbps 24 dBm @ 24Mbps 24 dBm @ 36Mbps 23 dBm @ 48Mbps 23 dBm @ 54Mbps	<b>802.11n(2.412 ~ 2.472GHz)</b> 26 dBm @ MCS0/MCS8 26 dBm @ MCS1/MCS9 25 dBm @ MCS2/MCS10 25 dBm @ MCS3/MCS11 24 dBm @ MCS4/MCS12 24 dBm @ MCS5/MCS13 23 dBm @ MCS6/MCS14 23 dBm @ MCS7/MCS15		
Receiver Sensitivity	802.11b (2.412 ~ 2.472 GHz) best ≤ -93 dBm 802.11g (2.412 ~ 2.472 GHz) best ≤ -90 dBm 802.11n (2.412 ~ 2.472 GHz) best ≤ -88 dBm			
Antenna	Embedded omnidirectional antenna (Diversity support) Antenna Gain = 5 dBi			

## SOFTWARE SPECIFICATIONS

Topology	Infrastructure/Ad-Hoc
Operation Mode	Access Point/ WDS/Repeater
Multiple BSSID	Supports up to 4 BSSIDs
LAN	IP (check validity and DHCP server IP range) MAC
VLANs	Supports 802.1q (up to 4 VLANs) SSID to VLAN mapping
Spanning Tree	Supports 802.1d Spanning Tree Protocol
Wireless	Wireless mode: 11b/11g/11n Channel selection (setting varies by country) Channel bandwidth (Auto, 20MHz, 40MHz) Transmission rate: 11n only, 11b/g/n mix, 11b only, 11b/g, 11g only
VPN	VPN pass-through (PPTP, L2TP, IPSEC)
QoS	WMM
WPS	Software only
Security	WEP Encryption - 64/128 bit WPA Personal (WPA-PSK using TKIP or AES) WPA Enterprise (WPA-EAP using TKIP) 802.1x Authenticator SSID broadcast enable/disable MAC Address Filter(AP mode) WLAN L2 isolation(AP mode) Wireless STA (Client) connected list (Idle/Connection Time, Pkt statistics)

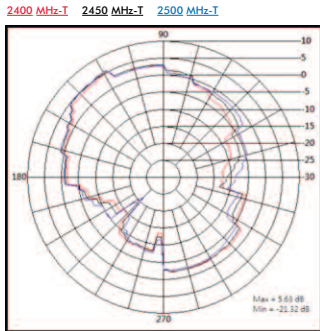
## MANAGEMENT

Tx Power Control	Adjust transmit power by dBm
Configuration	Web-based configuration (HTTP/Telnet)
Telnet Server	CLI
Firmware Upgrade	Upgrade firmware via web browser
Administrator Setting	Administrator Username & Password change
Reset Setting	Reboot (press 1 second). Reset to Factory Default (press 10 second)
System Monitoring	Status Statistic and Event log
SNMP	V1 , V2c
MIB	MIB 1 , MIB II(RFC1213) and Private MIB
Traffic Measurement	Per interface
Auto-channel Selection	Automatically selecting least congested channel
Bandwidth Measurement	IP range and bandwidth management
Backup & Restore	Save & restore settings through Web interface
Diagnosis	IP pinging statistics

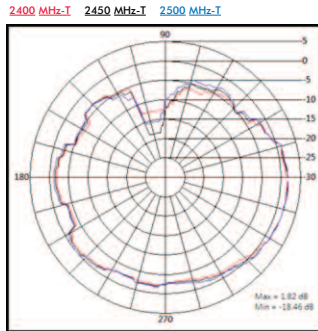
## ENVIRONMENT & PHYSICAL

Temperature Range	Operating: 0 to 50° C (32° to 122° F) Storage: -20 to 60° C (-4° to 140° F)
Humidity (non-condensing)	Operating: 90% or less Storage: 90% of less
Dimensions	Diameter: 4.73" (120mm) Height: 1.97" (50mm)
Weight	0.62 lb. (280g)
Certifications	FCC, CE, IC

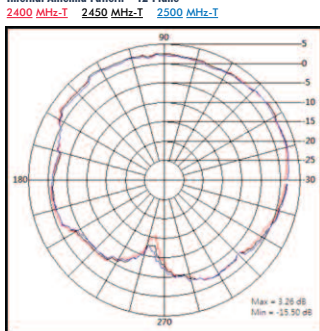
Internal Antenna Pattern – XY-Plane



Internal Antenna Pattern – XZ-Plane



Internal Antenna Pattern – YZ-Plane



EnGenius Technologies 1580 Scenic Avenue • Costa Mesa, CA 92626, USA  
888.735.7888

